

SUCCESS EPITOMIZED

Success is predictable when you have the right keys.

MENTAL PERFORMANCE SPECIALIST

Objective

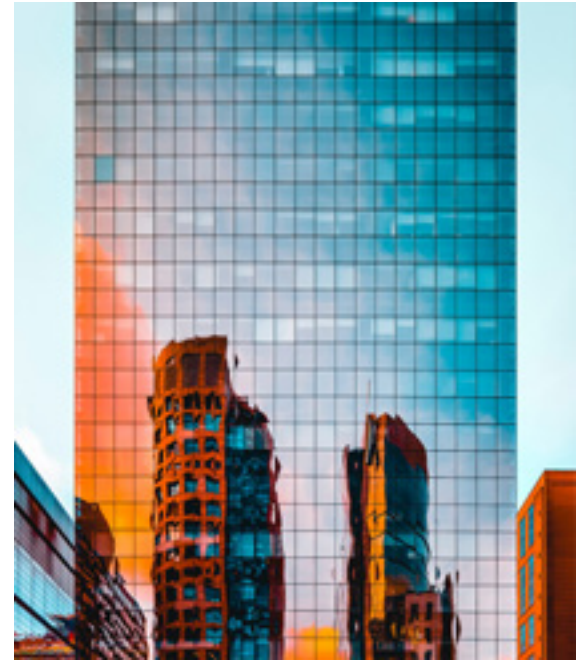
To advise and consult clients in the Success Epitomized Foundational and Professional Peak Performance Systems to help clients get into their calling and vocation. Help clients find their industry for the call and vocation and how to get into industry.

Essential Duties & Responsibilities

- Advise and consult clients in the foundational and professional peak performance systems.
- Work with clients within the Success Epitomized database
- Promote the Foundational and Professional Peak Performance systems to gain their own clients
- Consistently meet and exceed monthly enrollment goals and provide clients with exceptional services.
- Maintain accurate records of client meeting activities and statistics within the CRM program
- Make outbound correspondence to potential and existing customers by telephone and e-mail to qualified leads and encourage to join the Foundational and Professional Peak Performance systems.
- You will conduct advising and consulting sessions over video conferencing
- Build and maintain customer relationships.
- Other duties or special projects to be assigned by the Manager.

Qualifications

- A demonstrated ability to effectively work as a team with other members of the mental performance Specialist team and various departments within the company to achieve individual, departmental and company goals.
- Acceptable modern computer skills and be expected to follow all company policies and procedures.
- Ability to build rapport and be able to correspond with people from all over the world.
- Ability to effectively communicate with all types of people.
- Ability to carry out instructions furnished in written, oral and diagram form.
- Ability to work from your home.



Location

Virtual, In-home

Employee Type

Full-time, Part-time

Manage Others

No

Experience

None

Travel

None

Compensation

\$24,000-\$60,000+

Interested in applying for this position?